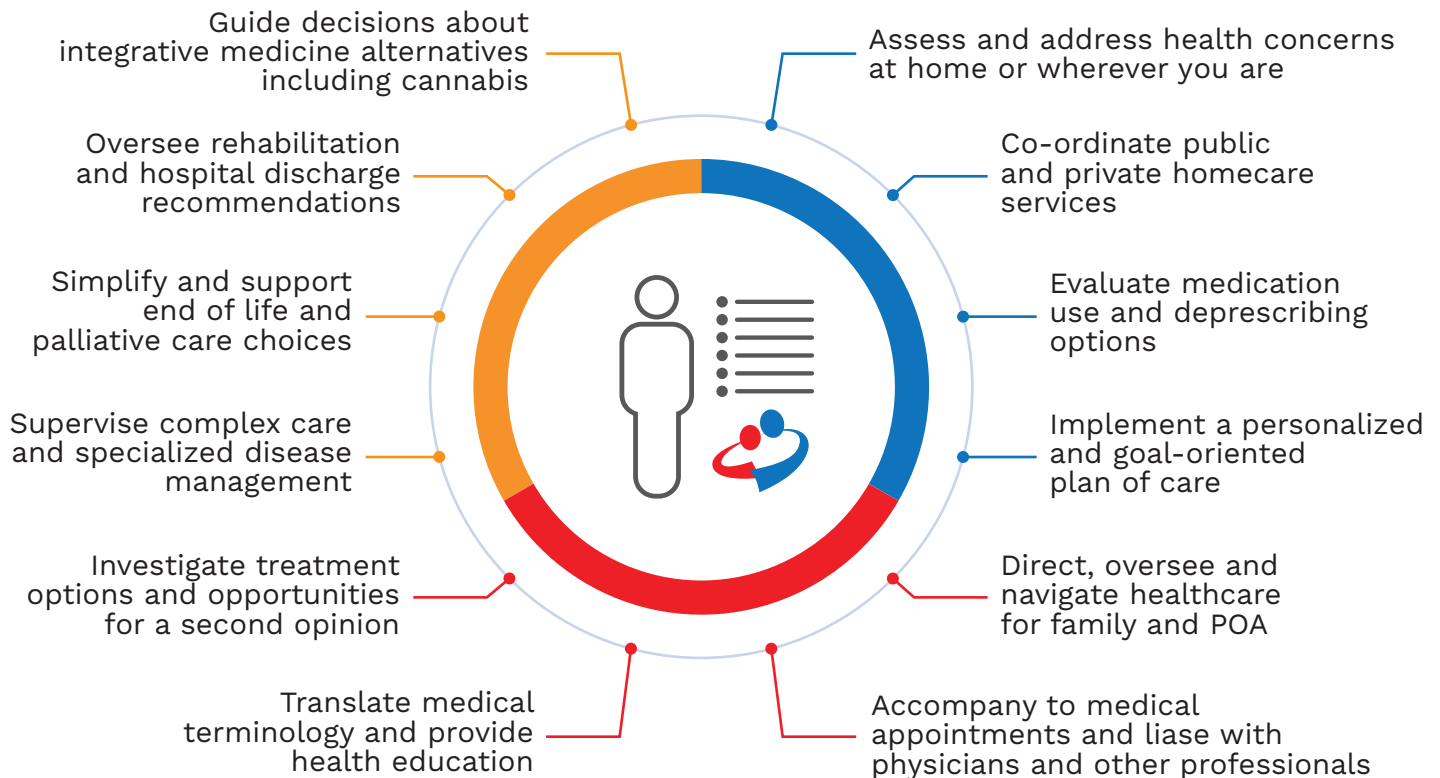


# What's the best way to reach your destination on an unfamiliar journey?

## With a trusted guide at your side!

Collaboration is key to decreasing the complexity of healthcare. Our dedicated Care Managers consider the full spectrum of your physical and mental health needs, from the first diagnosis, through acute and chronic care, to end of life wishes. Our clients and their families appreciate a qualified advisor, especially seniors who are wishing to age in place. We are dedicated to providing you with essential care at the right time, in the right place, with the right provider. At Nurse On Board, our Care Managers are highly experienced Registered Nurses. They work directly with you and your loved ones to achieve your best health outcomes. This seasoned support brings together home care, primary health care, and acute care under a single coordinating Care Manager. You will enjoy regular assessments, a single point of contact to optimize health-related services, effective communication and consistent care.



**CARE MANAGEMENT= ADVOCACY + NAVIGATION + HOLISTIC CARE**